

# HOUSE & LAND

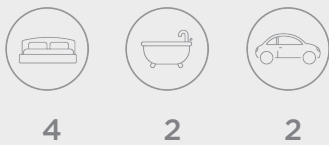
Sanctuary  
RANGE

\$10,000 OUTDOOR LIVING BONUS



ICE LYN 243

**\$686,240\***



TOTAL (sqs)	26.14
TOTAL (m²)	242.83
WIDTH (m)	12.71
LENGTH (m)	21.33

**LOT 816 PICKERING AVENUE, MORWELL  
VIC 3840**

LAND: 612m²

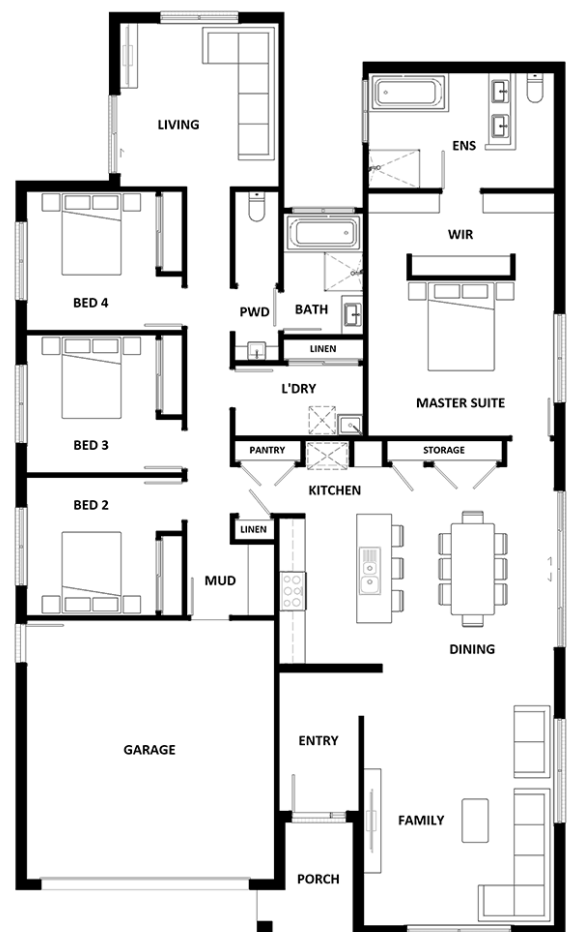
## Features & Inclusions:

- Dishwasher
- Double Glazed Windows
- Local builder/Local trades
- Remote Garage Door
- Vinyl planks, carpet and tiles throughout
- Site cost allowance
- Sanctuary Inclusions
- 20mm Stone Benchtops

For more information contact:

**Lorelle Lowe 03 4109 1656**

Builder Licence: DB-U 63936



\*Dimensions, photographs, floor plans and facade images are approximate and for illustrative purposes only. They are not drawn to scale. The dimensions provided of "width" and "length" are the actual dimensions of the completed house including alfresco areas (where applicable). It is the home owner's responsibility to ensure that all applicable council regulations and estate requirements are met. Subject to land availability, pricing and site costs unless advertised as a 'fixed price package'. Driveway size based on builder's preferred siting. Check with your local builder for builder's standard range and inclusions. Photographs may include optional features or items that are not supplied by Hotondo Homes. Hotondo Homes reserves the right to change plans, specifications, materials and suppliers without notice. For more information visit your local builder or hotondo.com.au.

