

House & Land Package

Lot 120 Washington Way Morwell

Title expected December 2024

Newport 36

BRIDGEWATER

From **\$750,123**



7 STAR
ENERGY RATED

2590mm
CEILINGS

FLOORING
THROUGHOUT

House Size

36.87sq

House Dimensions

11.66m W x 19.26m L

Block Size

634m²

Lot Size

18.7m W x 33.9m L



Inclusions

- Fixed site costs
- Developers guidelines
- Choice of Included Facades
- 7 Star energy efficiency rating to all orientations
- Up to 5.0kw solar PV system and Inverter
- 2590mm ceilings to ground floor
- Downlights to Entry, Kitchen, Family and Meals
- Choice of Laminate or Tiled flooring to Entry, Kitchen, Family and Meals. Carpet to the remaining areas
- 900mm Upright Stainless Steel oven and cooktop
- 20mm Quantum Zero Benchtops to Kitchen, Ensuite, Bathroom and Powder Room



Contact

Andrew Guthrie

0481 430 866

aguthrie@fairhavenhomes.com.au

Fairhaven Homes



VIEW
MORE
PACKAGES

HERITAGE
PLACE
MORWELL

Terms and conditions apply. See website for details. CDB-U 48497.

House & Land Package

Byron 27

BRIDGEWATER

Lot 120 Washington Way Morwell

Title expected December 2024

From **\$623,262**



7 STAR
ENERGY RATED

2590mm
CEILINGS

FLOORING
THROUGHOUT

House Size
27.75sq

House Dimensions
12.21m W x 23.25m L

Block Size
634m²

Lot Size
18.7m W x 33.9m L

4

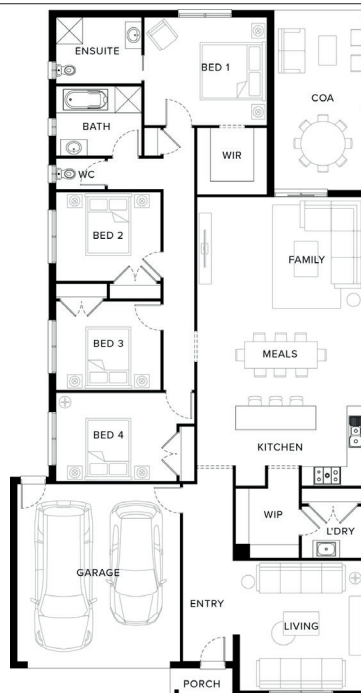
2

2

2

Inclusions

- Fixed site costs
- Developers guidelines
- Choice of Included Facades
- 7 Star energy efficiency rating to all orientations
- Up to 5.0kw solar PV system and Inverter
- 2590mm ceilings to ground floor
- Downlights to Entry, Kitchen, Family and Meals
- Choice of Laminate or Tiled flooring to Entry, Kitchen, Family and Meals. Carpet to the remaining areas
- 900mm Upright Stainless Steel oven and cooktop
- 20mm Quantum Zero Benchtops to Kitchen, Ensuite, Bathroom and Powder Room



Contact

Andrew Guthrie
0481 430 866
aguthrie@fairhavenhomes.com.au

Fairhaven Homes



VIEW
MORE
PACKAGES

HERITAGE
PLACE
MORWELL

Terms and conditions apply. See website for details. CDB-U 48497.

House & Land Package

Lot 120 Washington Way Morwell

Title expected December 2024

Clovelly 27

BRIDGEWATER

From **\$625,700**



7 STAR
ENERGY RATED

2590mm
CEILINGS

FLOORING
THROUGHOUT

House Size

27.7sq

House Dimensions

12.45m W x 23.36m L

Block Size

634m²

Lot Size

18.7m W x 33.9m L



4



2



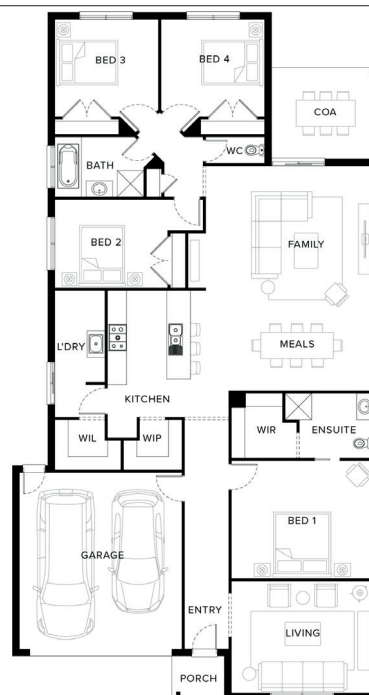
2



2

Inclusions

- Fixed site costs
- Developers guidelines
- Choice of Included Facades
- 7 Star energy efficiency rating to all orientations
- Up to 5.0kw solar PV system and Inverter
- 2590mm ceilings to ground floor
- Downlights to Entry, Kitchen, Family and Meals
- Choice of Laminate or Tiled flooring to Entry, Kitchen, Family and Meals. Carpet to the remaining areas
- 900mm Upright Stainless Steel oven and cooktop
- 20mm Quantum Zero Benchtops to Kitchen, Ensuite, Bathroom and Powder Room



Contact

Andrew Guthrie

0481 430 866

aguthrie@fairhavenhomes.com.au

Fairhaven Homes



VIEW
MORE
PACKAGES

HERITAGE
PLACE
MORWELL

Terms and conditions apply. See website for details. CDB-U 48497.