



HERITAGE PLACE ESTATE

Lot 119 Washington Way, Morwell

House: 25.3 Sq | Land: 634m² | Frontage: 18.7m

\$595,500*

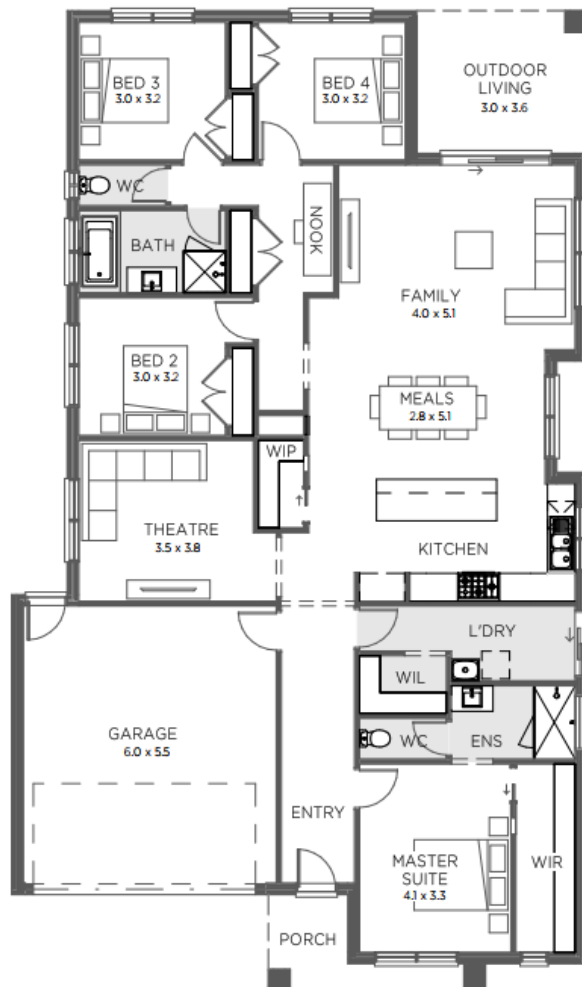
MORRISON TREND 253

EVOLUTION RANGE

- Façade as shown – others available
- 2590mm ceilings
- Colorbond roof
- 20mm stone benchtop to kitchen & overhead cupboards
- 900mm stainless steel appliances
- Double glazed sliding doors and windows
- Laminate timber FX to entry, front hallway, kitchen, meals area and tiles to all wet areas
- Quality carpet to remaining areas
- Automatic garage door remote
- Gas ducted heating
- Energy efficient heat pump
- Colour Appointment with Interior Designer
- Developer requirements
- Allowance for site costs
- Includes First Home Buyers Grant*

Perfect for young families and investors – option to add full turnkey package

Not the package for you...contact me today to discuss other House & Land Packages to suit your needs.



4



2



2



2

*Some images are for illustration purposes only and may not include items in all SJD products. The prices are based on each house as standard and not as displayed. Plan may need to be adjusted to suit block requirements. Unless specified as a fixed price, additional costs may be incurred due to undetermined site conditions based on the results of a site survey and soil test. SJD reserves the right to alter prices or the terms without notice. Unless specified above, price does not include BAL Rating or First Home Owners Grant. Land was available at the time of advertising. For more information visit sjdhomes.com.au. Modifications may be required to suit NCC