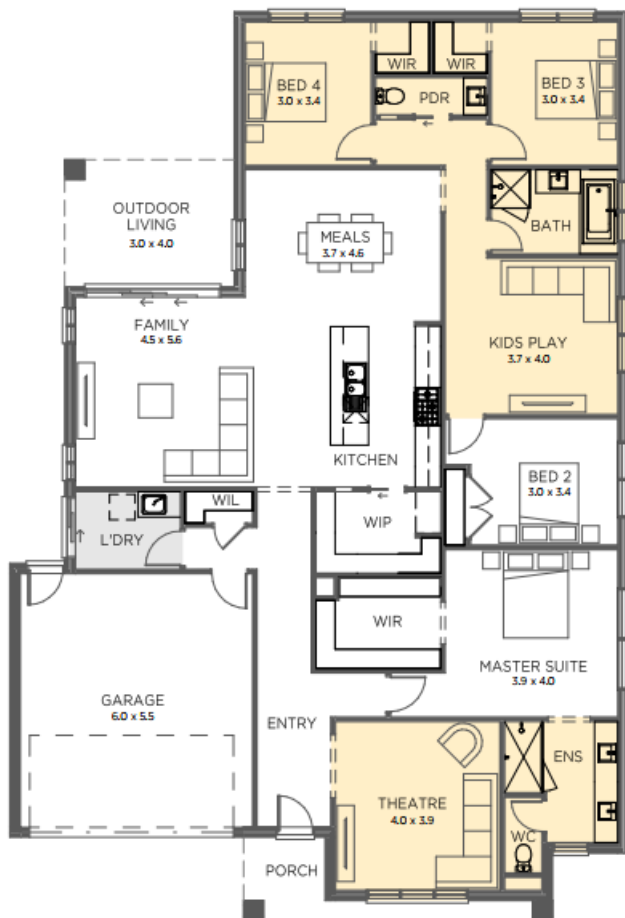


HOUSE & LAND PACKAGE

SJDhomes
Building **more** than homes



\$638,800

HERITAGE PLACE ESTATE – TITLES DUE DEC 24
Lot 118 Washington Way, Morwell
House: 28.9Sq | Land: 634m² | Frontage: 18.70m



DAINTREE 289 – SJD Signature Range

- Façade as shown – others available
- Double glazed sliding doors and windows
- 2590mm ceilings
- Colorbond sectional garage door with remote
- 20mm stone benchtop to kitchen & 900mm appliances
- Flush tiled shower bases and shower rails
- Extensive floor tiling/timber laminate flooring options
- Quality Carpet throughout
- Gas ducted heating
- Energy efficient heat pump hot water system
- Developer requirements
- Site Cost Allowance
- Includes First Home Owners Grant

Build with confidence with an award winning builder

Not the package for you...contact me
today to discuss homes to your needs

Signature
RANGE

Colette Battersby Building Consultant
M: 0433 315 513 E: colette@sjdhomes.com.au

*Some images are for illustration purposes only and may contain items not included in all SJD products. The prices are based on each house as standard and not as displayed. SJD Homes reserves the right to alter prices or the terms without notice. For more information visit: www.sjdhomes.com.au
Modifications may be required to suit NCC