

House & Land Package

Lot 118 Washington Way Morwell

Title expected December 2024

Vibe 21

SIMPLICITY

From **\$537,738**



7 STAR
ENERGY RATED

2590mm
CEILINGS

FLOORING
THROUGHOUT

House Size
21.98sq

House Dimensions
10.9m W x 21.17m L

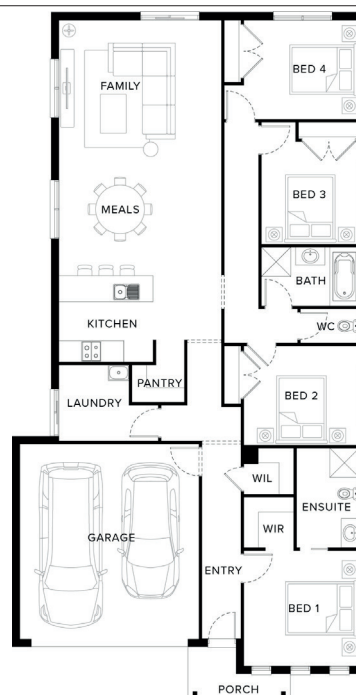
Block Size
634m²

Lot Size
18.7m W x 33.9m L



Inclusions

- Fixed site costs
- Developers guidelines
- Choice of included facades
- 7 Star energy efficiency rating to all orientations
- 3.0kw solar PV system and Inverter
- Tiled shower bases
- Colorbond Roof Included
- Choice of Laminate or Tiled flooring to Entry, Kitchen, Family and Meals. Carpet to the remaining areas
- 600mm Technika oven and cooktop
- 20mm Quantum Zero Benchtops to Kitchen



Contact

Andrew Guthrie
0481 430 866
aguthrie@fairhavenhomes.com.au

Fairhaven Homes



VIEW
MORE
PACKAGES

HERITAGE
PLACE
MORWELL

Terms and conditions apply. See website for details. CDB-U 48497.

House & Land Package

Shoal 26

BRIDGEWATER

Lot 118 Washington Way Morwell

Title expected December 2024

From **\$615,964**



7 STAR
ENERGY RATED

2590mm
CEILINGS

FLOORING
THROUGHOUT

House Size

26.51sq

House Dimensions

12.6m W x 21.9m L

Block Size

634m²

Lot Size

18.7m W x 33.9m L



4



2



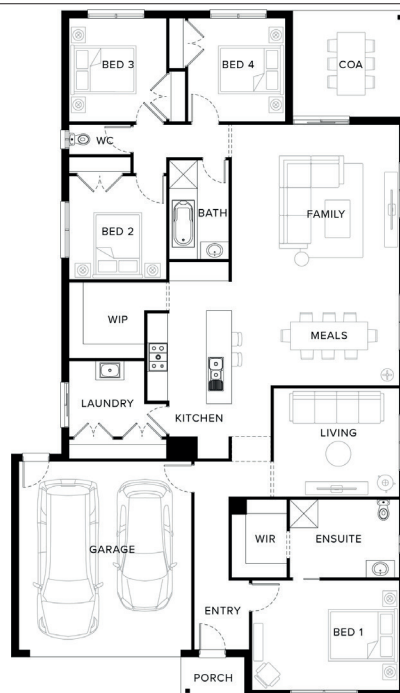
2



2

Inclusions

- Fixed site costs
- Developers guidelines
- Choice of Included Facades
- 7 Star energy efficiency rating to all orientations
- Up to 5.0kw solar PV system and Inverter
- 2590mm ceilings to ground floor
- Downlights to Entry, Kitchen, Family and Meals
- Choice of Laminate or Tiled flooring to Entry, Kitchen, Family and Meals. Carpet to the remaining areas
- 900mm Upright Stainless Steel oven and cooktop
- 20mm Quantum Zero Benchtops to Kitchen, Ensuite, Bathroom and Powder Room



Contact

Andrew Guthrie

0481 430 866

aguthrie@fairhavenhomes.com.au

Fairhaven Homes



VIEW
MORE
PACKAGES

HERITAGE
PLACE
MORWELL

Terms and conditions apply. See website for details. CDB-U 48497.

House & Land Package

Lot 118 Washington Way Morwell

Title expected December 2024

Hyland 25

BRIDGEWATER

From **\$619,725**



7 STAR
ENERGY RATED

2590mm
CEILINGS

FLOORING
THROUGHOUT

House Size
25.32sq

House Dimensions
14.8m W x 20.24m L

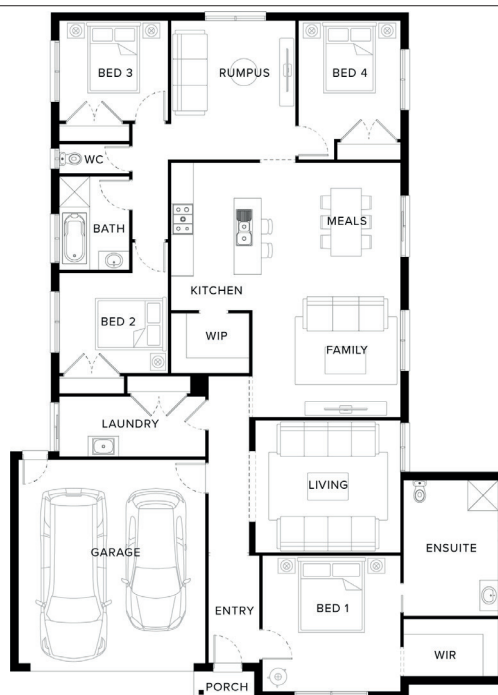
Block Size
634m²

Lot Size
18.7m W x 33.9m L



Inclusions

- Fixed site costs
- Developers guidelines
- Choice of Included Facades
- 7 Star energy efficiency rating to all orientations
- Up to 5.0kw solar PV system and Inverter
- 2590mm ceilings to ground floor
- Downlights to Entry, Kitchen, Family and Meals
- Choice of Laminate or Tiled flooring to Entry, Kitchen, Family and Meals. Carpet to the remaining areas
- 900mm Upright Stainless Steel oven and cooktop
- 20mm Quantum Zero Benchtops to Kitchen, Ensuite, Bathroom and Powder Room



Contact

Andrew Guthrie
0481 430 866
aguthrie@fairhavenhomes.com.au

Fairhaven Homes



VIEW
MORE
PACKAGES

HERITAGE
PLACE
MORWELL

Terms and conditions apply. See website for details. CDB-U 48497.