

HOUSE & LAND

retreat
— RANGE —

\$10,000 OUTDOOR LIVING BONUS



ELSIE 199

\$591,235*



4



2



2

TOTAL (sqs)	21.37
TOTAL (m ²)	198.54
WIDTH (m)	11.27
LENGTH (m)	19.43

**LOT 118 WASHINGTON WAY, MORWELL
VIC 3840**

LAND: 634m²

Features & Inclusions:

Site cost allowance

Double Glazed Windows

Remote Garage Door

Colorbond Roof

Dishwasher

Ducted Heating

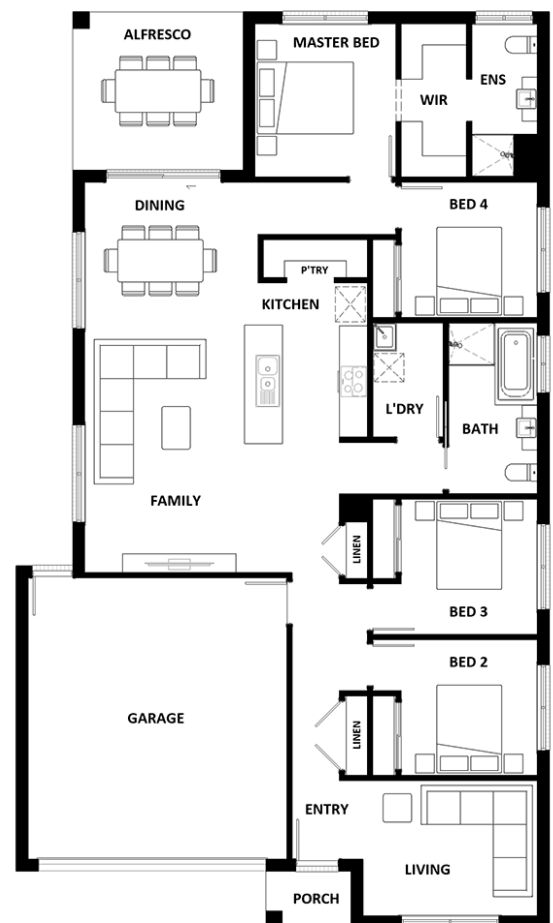
Local builder/Local trades

Vinyl planks, carpet and tiles throughout

For more information contact:

Lorelle Lowe 03 4109 1656

Builder Licence: DB-U 63936



*Dimensions, photographs, floor plans and facade images are approximate and for illustrative purposes only. They are not drawn to scale. The dimensions provided of "width" and "length" are the actual dimensions of the completed house including alfresco areas (where applicable). It is the home owner's responsibility to ensure that all applicable council regulations and estate requirements are met. Subject to land availability, pricing and site costs unless advertised as a 'fixed price package'. Driveway size based on builder's preferred siting. Check with your local builder for builder's standard range and inclusions. Photographs may include optional features or items that are not supplied by Hotondo Homes. Hotondo Homes reserves the right to change plans, specifications, materials and suppliers without notice. For more information visit your local builder or hotondo.com.au.

**Hotondo
Homes**